

TE HEKE RANGATIRA

Whatungarongaro te Amokapua

Toitū ko Te Heke Rangatira, toitū ko Wairarapa Moana

Ko Tūnuirangi Parane te tangata e tū ana ki tētahi waka rahi, me tētahi hinaki ranea hoki. He pātata atu ki Te Roto o Onoke i te tau 1904. Kāore e mohiotia ana nā wai te whakaahua i tango. Kei te Te Papa Tongarewa



- He ringa rehe, he tautōhito ngā uri o te Moana Nui a Kiwa ki te whakaterere waka ki ngā rangiwāwhātanga o te moana mā te āta mātai i ngā tohu o te rā, o ngā whetū, o te marama, o ngā hau pupuhi, me te ia o te moana. Ā, i te hokinga atu ki te whenua ūkaipō he ranea ngā kōrero i tukuna mō ngā whenua me ngā tāngata manene i kitea, i hōpara. I wehe atu ngā iwi o Te Wairarapa i te ipukarea o Hawaiiki i te rau tau tekau mā rua ki te whenua i whakatōmenetia ai e Kupe, ki te whenua e kīia nei ko Aotearoa. He rehe tuku iho te whakaterere waka i kōrerotia ai e Tūnuirangi, rangatira o Te Wairarapa, ki a Elsdon Best i te rau tau 1900. Ki tāna, nā ēnei pūkenga mō te eke waka me te hī ika ki tai i tohunga katoa a ngāi Māori ki te whakatau matapae huarere.

- Ko te nuinga o ngā waka i whakamahia hei kawe i te tangata, i te rawa hoki, me te hari i ngā kaihao ki tai. E toru ngā tūmomo waka matua i hangaia, ko te waka hourua, ko te waka takere kotahi (te waka ama), me ngā waka takere kotahi kāore tōna ama e kīia nei he *waka taua*, he *waka tētē* me te *waka tiwai* hoki. Ahakoa i kitea te waka hourua me te waka ama anō hoki i te wā i a Kāpene Kuki i mōnehu katoa te whakamahinga. Tērā te waka hourua ko Ngā-toto tōna ingoa, nā Tahuahi, i kitea i te takutai moana o Wairarapa, ā, nā Te Whatahoro anō a Best i whakahau ki te āhua o tētahi haerenga *‘poto noa iho nei’* ōna i Waimārama ki Te Ununu i te tau 1853, i a ia e taiohi ana.



Kei tētahi repo ki Waibēnga tēnei waka, kei Te Wairarapa ki Te Tonga, nō te tau 1968. Ko Foss Leach te kaihopu whakaahua

- Ko te waka taua anake tērā momo i whakamahia tonuhia i muri mai i te wā i tau ai ngā pākehā ki tēnei whenua. He waka nui taioreore i ekengia e ngā hōia. Ko te nuinga o ngā waka taua i whakarākeingia, ā, ko te taurapa me te tauihu i tāraia, i whakairohia. Koinei te āhuahanga o Te Heke Rangatira. Ko ngā waka tētē me ngā waka tiwai kāore he iti iho, ā, kāore hoki i āta whakarākeingia. Ko te haerere, ko te hī ika hoki ngā tino kaupapa i whakamahia ai ēnei momo waka.

- Ka kitea te mana hira nui o tēnei mea te waka i roto i tētahi ohanga i waenganui i te iwi o Rangitāne ki Wairarapa Moana me tētahi ope tūwaeuae nō Ngāti Kahungunu ki Heretaunga i tau atu ki Te Roto o Onoke i te rau tau 1500 ki te rapu whenua hei noho mā rātou. Ko te utu anake i whakaetia e Rangitāne mō te whenua nei, ko ngā waka haere moana kia pai ai tā rātou kotahi atu ki te tai tonga.

- He takoha te waka Te Heke Rangatira ki Te Whare Tongarewa o Aotearoa whānui i te tau 1905 e Ani Hiko, te wahine nōna te waka, te tamāhine o Te Hiko-o-te-rangi, rangatira o Wairarapa Moana. I tētahi tuhinga āna i whakamāramatia e ia, *“kua kore he take mōku te whakamahi tonu i te waka nei”*. I taua wā i te whakamahia te waka nei e tōna iwi hei waka tere i Te Roto o Onoke.

- Ki tā te tuhinga nā Ani Hiko, *“Ko te ingoa o te waka ko Te Heke Rangatira nō te tau i matemate ai ngā rangatira ka tapaina tēnei ingoa a Te Heke Rangatira”*. Kua whakapākehātia, kua whakamāramatia tēnei e Mair i tētahi o āna tuhinga. Ko te āhua nei i hangaia kētia tēnei waka kātahi ka tapaina ki te ingoa Te Heke Rangatira hei tohu whakamaharatanga i tētahi parekura, kuaa kē hei waka kawe tangata.

- I waihangaia a Te Heke Rangatira ki te pororākau tōtara kōtahi. Ki tā Best whakaahuatanga he waka hī ika, he taurira hoki o *“tētahi waka Māori taumata tuarua”*, arā, he waka tētē i whakamahia i te wā o te hī ika ki tai, o te whakaterere waka ki tai, o te kawe hōia hoki. Hei āpiti atu, ka kōrerohia tēnei waka e ia, he waka tere, he waka hōu hoki i hangaia i ngā tau 1870, ā, ko tāna tino mahi ko te kawe i ngā rawa i Wairarapa Moana.

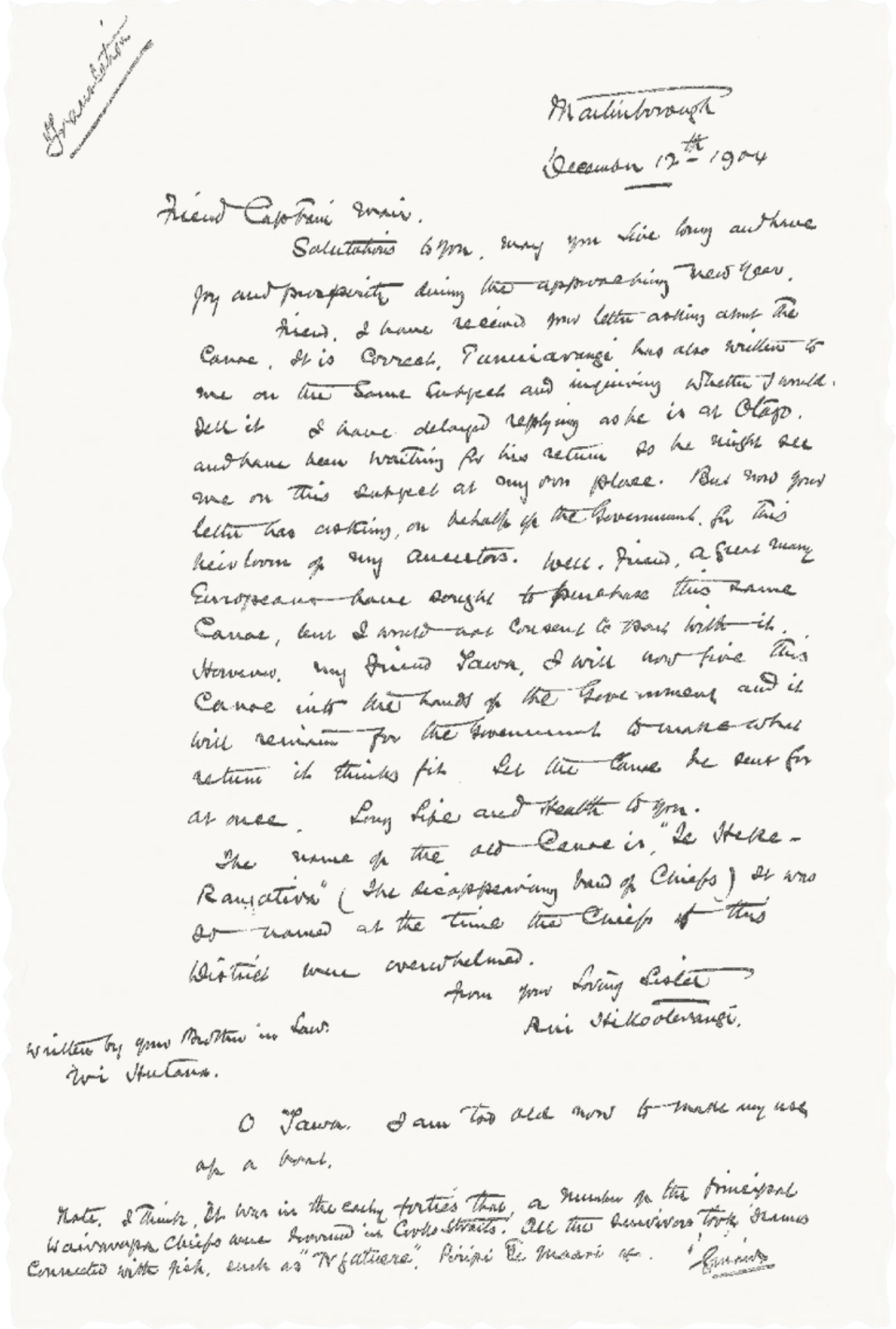
- He maha tonu ngā whakamahukitanga mō te takinga mai o te ingoa Te Heke Rangatira. Ki tā Best, i tapaina te waka ki tēnei ingoa hei tohu i te hekenga o ngā tāngata o Ngāti Kahungunu ki Heretaunga ki te takiwā o Te Wairarapa. Ko tā Mair whakatau, i ahu mai te ingoa nei i ngā tau 1840, i te parekura nui nō reira i toromi ai ētahi tino rangatira o Te Wairarapa i te Moana o Raukawa. E whakapae ana e hāngai pū ana ēnei kōrero ki a Te Kai-a-te-kōkopu rāua ko Tū-te-pakihī-rangi, he tino rangatira nō Te Wairarapa i toromi i te tau 1844 i Te Mātakitaki-a-Kupe.



- Tō atu, tō mai, kei ngā kōrero a tētahi wahine ko Te Heke Rangatira Boyd o Papawai i Te Wairarapa te whakamāramatanga e kitea ai i te ahunga mai o te ingoa o te waka. Ki tāna, he pērā ki tōna ake ingoa, i hua mai te ingoa nei i te hekenga o ngā tāngata o Te Wairarapa ki Nukutaurua i Te Matau a Māui, ā, ko te roanga atu o te ingoa ko Te Heke Rangatira ki Nukutaurua. Ko te āneatanga i puta i te ngā tau 1820 i te wā i whakaekēkengia rātou e tētahi iwi nō Te Whanganui a Tara te take i hūnuku atu ai rātou ki Nukutaurua. I te tokomaha i parekuratia, i hinga ko tētahi amokapua o Te Wairarapa ko Te Maari-o-te-rangi, te tipuna māna i whakaingoaia te tangata Piripi Te Maari.

- Nō te takohatanga atu, ko tō Te Whare Tongarewa Dominion hiahia, ko te panoni i Te Heke Rangatira hei waka taua. Ko tā Augustus Hamilton, kaihautū o Te Whare Tongarewa nei, i tana urupare ki te reta nā Ani Hiko i tuku i kī atu, *‘harikoa katoa ana (au) ko Te Whare Tongarewa te ahurutanga mō te waka nei’*, ā, *‘ka whakarākeingia ki ngā whakairo ātaahua riririre o te waka taua’* hei whakamānawatanga ki ‘te heke rangatira’. I te whakamāoritanga o te tuhinga ka kī ake, *‘Ka rauawatia, puhi puhi rawa ki te toroa me ōna taonga katoa, ā, ka āta waiho hei whakamaharatanga ki te ao mō te heke o ngā rangatira’*. He tikanga tēnei, te rāwekeweke i te hanganga o ngā taonga e ērā momo wāhi i aua wā, heoi, e korekore rawa ērā mahi e whakaetia ana i ēnei rangi nei.

Te whakapākehātanga o te reta nā Ani Hiko i whakatu ana i te āhua o te takohatanga o te waka Te Heke Rangatira, 12.12.1904, nā Gilbert Mair



- Ahakoa tēnei, kāore tērā i moehewatia e rātou i whakatinanatia tae noa ki te wā i kuhu atu a Tāmati Heberley, he ringa toi whakairo nō Te Ātiawa, hei kaimahi i Te Whare Tongarewa i te tau 1926. Nāna te rauawa, te tauihu me te taurapa o Te Heke Rangatira i tārai. E ai ki tā Roger Neich, i hinga i ēnei tau nei, he tāruatanga te hanga o te tauihu i tētahi whakairo rongonui nō roto o Ngāti Tarāwhai o Te Arawa kei te whare pupuri taonga e kīia nei ko te Berlin-Dahlem Ethnological Museum. Hei āpiti atu, ko te tauihu ake o te waka nei he taurira hanganga motuhake i takea mai i te waka e kīia ana ko Te Arawa i whakairotia i ngā tau 1860 e Anaha Rāhui, he uri nō Ngāti Tarāwhai. He kupu whakatakā tā Best mō te āhuahanga o te rauawa me tāna, he Pākehā kē, kua hē katoa hoki te āhua.

- I te tau 1930 i whakawhiwhia ki Te Whare Tongarewa o te motu ki tētahi waka nō Whanganui ko Teremoe, ā, koinei pea te take i whakaetia te takoha atu o Te Heke Rangatira e rātou ki te whare pupuri taonga o Waitaha i te tau 1949. Nā Tāmati Heberley anō ētahi wāhanga o Teremoe i whakairo. I waea te waka nei. Ko Lotua Tuarau, he kaiwhakairo nō Waitaha, te tangata nāna i kawe i te waka ki roto o Waitaha. Nāna hoki ngā mahi whakahono anō i ngā wāhanga o te waka i tutuki, ā, kua whakaahuatia ēnei me ētahi atu mahi āna ki tētahi kiriata nā Ernest Adams i waihanga. I noho ko te whare pupuri taonga o Waitaha hei kāinga mō te waka nei tae noa ki te Whiringa-ā-rangi i te tau 1993, te wā i whakahokia atu ki Te Whare Tongarewa o te motu i Te Whanganui a Tara.



Te tauhu o te waka Te Arawa i Te Whare Tongarewa Berlin-Dahlem Ethnological Museum. He whakaahua nō Mussen Zu Berlin – Preussischer Kulturbesitz Museum Für Völkerkunde

- Mārakerake ana te kitea i te tuhinga nā Augustus Hamilton, nō te tau 1905, i tōna āhuareka ki te whakatau kia noho te waka i āhurutanga o Te Whare Tongarewa. Ko te whakapanoni i te waka hei waka taua hei tohu maharatanga ki tērā hunga, *Te Heke Rangatira*, hei tirohanga hoki mā ērā ō rātou uri. Nā reira, e taea ai te kī, he tūkinotanga te noho noa iho i te rima tekau tau i muri mai ki te whare pupuri taonga o Waitaha. He noho puku, he noho mokepuihi i ōna kārangatanga me te hunga e pikore ana ki tōna tino ahurei. Nō te hokinga atu ki Te Whare Tongarewa, ki tua atu i tētahi toronga ki te Wairarapa, kua ngaro atu i te tirohanga kanohi, kua pupuri tonu ki ngā pātengi o Te Papa.

Te Heke Rangatira i a ia i Te Whare Tongarewa o Waitaha. He koha tēnei whakaahua nā Te Whare Tongarewa o Waitaha



Ko Tāmati Heberley tēnei, te ringa toi whakairo me tētahi ʻpiti ā kura ki roto i Te Whare Tongarewa Dominion, ki te wharau i te Huarahi o Sydney, i Te Whanganui a Tara, c1935. Nō te nuipepa Dominion Post te whakaahua nei, he mea tiaki e te Te Puna Mātauranga Alexander Turnbull, Te Whanganui a Tara



- Nō te ngā tau 1980, i whai wāhi atu tētahi o ngā kura wānanga o te Wairarapa a Mita Carter ki ngā kōrero mō Te Heke Rangatira, ā, nāna te take kia whakahokia mai ki ngā uri o Te Wairarapa ki te tonga i urungitia. I whai hua tēnei urungitanga ōna i te hokinga atu o Te Heke Rangatira ki Te Wairarapa hei tirohanga mā te tini ngerongerō i tae atu ki ngā whakataetae kapa ā-rohe i te tau 1995. Nō te tīmatanga o te tau nei, i whakaekengia a Te Papa e tētahi tūwaeuae nō Te Wairarapa me te whānau o Ani Hiko mō te tuku tonu kia whakahokia mai te waka nei mō tēnei whakaaturanga. E whakaponō ana ngā uri o Te Wairarapa, ka ea ai te tino pūtake o te takohatanga o tēnei waka ki Te Whare Tongarewa o te wā mā te whakahoki atu ki Te Wairarapa oti atu.

Elsdon Best, The Maori Canoe Captain Gilbert Mair, Translation of Ani Hiko letter 12.12.1904 Roger Neich: Letter to National Museum dated 14.11.1986 Roger Neich: Carved Histories

